

Prince George's County Board of Elections  
1100 Mercantile Lane, Suite 115A  
Largo, MD 20774  
301-341-7300

**GENERAL ELECTION IMPORTANT DATES**

**2018 GENERAL ELECTION**

November 6, 2018  
7:00 a.m. – 8:00 p.m.

**EARLY & ABSENTEE VOTING**

October 25, 2018 to November 1, 2018  
10:00 a.m. – 8:00 p.m.

**Deadline to File As Write-In Candidate**

October 31, 2018  
5:00 p.m.

**Deadline to Register to Vote or Change Party Affiliation**

October 16, 2018  
9:00 p.m.

**Deadline to Request Absentee Ballot By Mail or Fax/Email**

October 30, 2018  
8:00 p.m. (mail request)  
11:59 p.m. (fax/email request)  
(301-341-7399/boeabsenteevoting@co.pg.md.us)

**Deadline to Request Absentee Ballot Electronically/Internet**

November 2, 2018  
5:00 p.m. (mail request)  
11:59 p.m. (fax/email request)  
(301-341-7399/boeabsenteevoting@co.pg.md.us)

Requests for Absentee Ballots must be received in the Board of Elections office by the deadlines in order to ensure that voters receive their Absentee Ballots in the mail prior to Election Day.

*Requests for Absentee Ballots may be hand delivered to the Prince George's County Board of Elections office. Upon delivery of your request, your Ballot may be picked up. When picked up, your Ballot may be taken with you and returned by mail or you may vote while at the Board of Elections.*



<http://elections.mypgc.us>  
[election@co.pg.md.us](mailto:election@co.pg.md.us)





**You can vote at your convenience!!**



**2018 GENERAL ELECTION – EARLY VOTING**  
**October 25, 2018 through November 1, 2018**  
**10:00 a.m. to 8:00 p.m.**

*Voting is convenient, accessible and on your schedule*

**Accokeek VFD Training & Activity Center**

16111 Livingston Road, Accokeek, MD 20607

**Baden Community Center**

13601 Baden-Westwood Road, Brandywine, MD 20613

**Bowie Gymnasium**

4100 Northview Drive, Bowie, MD 20716

**College Park Community Center**

5051 Pierce Avenue, College Park, MD 20740

**Kentland Community Center (New)**

2413 Pinebrook Avenue, Hyattsville, MD 20785

**Laurel-Beltville Senior Activity Center**

7120 Contee Road, Laurel, MD 20707

**Suitland Community Park School Center**

5600 Regency Lane, Forestville, MD 20747

**Southern Regional Technology and  
Recreation Complex**

7007 Bock Road, Fort Washington, MD 20744

**Upper Marlboro Community Center**

5400 Marlboro Race Track Road, Upper Marlboro, MD 20772

**VFW Post 8950, Hansen Hall (New)**

9800 Good Luck Road, Lanham, MD 20706

**Wayne K. Curry Sports and Learning Center**

8001 Sheriff Road, Landover, MD 20785

**Important Deadlines**

*Voter Registration Deadline: Tuesday, October 16, 2018 - 9:00 p.m.*

*Absentee Ballot Application Deadline: Tuesday, October 30, 2018*

*8:00 p.m. (mail) or 11:59 p.m. (fax/email)*

*For more information contact the Prince George's County Board of Elections at  
(301) 341-7300 or visit our website at:*

*<http://elections.mypgc.us>*

*email: [election@co.pg.md.us](mailto:election@co.pg.md.us)*



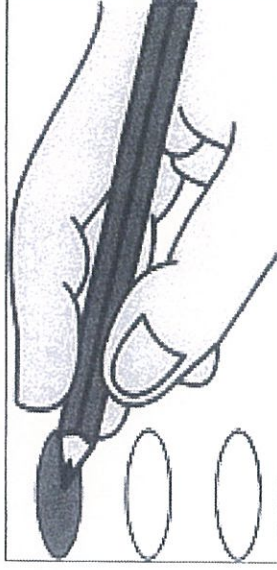
#mdvotes2018

# ★ ★ ★ 1, 2, 3, VOTE ★ ★ ★

## HOW PRINCE GEORGE'S COUNTY VOTES

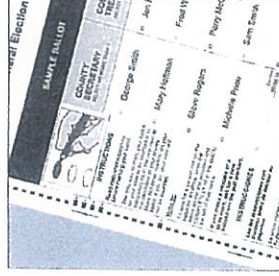
### 1 Mark Ballot

Mark the oval next to your choice using a black ballpoint pen. To cast write-in votes, mark the oval next to the write-in space, then print the candidate's name.



### 2 Review Ballot

Review that your ballot is marked correctly. Did you turn it over? There may be contests on the other side!

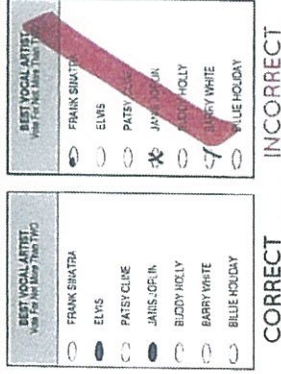


### 3 Scan Ballot

Insert your ballot into the ballot scanner. Your ballot can be tabulated in any orientation (right side up, backward, or upside down). A Thank you for voting screen will appear after your ballot is accepted.



## Correctly marking your ballot




IT IS IMPORTANT TO MARK YOUR BALLOT PROPERLY BEFORE INSERTING IT INTO THE BALLOT SCANNER TO ENSURE THAT YOUR VOTES ARE COUNTED CORRECTLY.

- Completely fill in the oval next to your choice using a black ballpoint pen. Do not use an 'x' or other notation.
- Do not mark more than the allowable number of selections per contest
- If you make a mistake when marking your ballot, ask an election worker for a replacement ballot
- Make sure all of the contests you intend to vote in are marked appropriately.

DO NOT FOLD YOUR BALLOT BEFORE INSERTING IT INTO THE BALLOT SCANNER.

PRINCE GEORGE'S COUNTY BOARD OF ELECTIONS

Find us on 

Prince Georges County Board of Elections

[elections.mypgc.us](http://elections.mypgc.us)

Follow us on 

@pgboelections